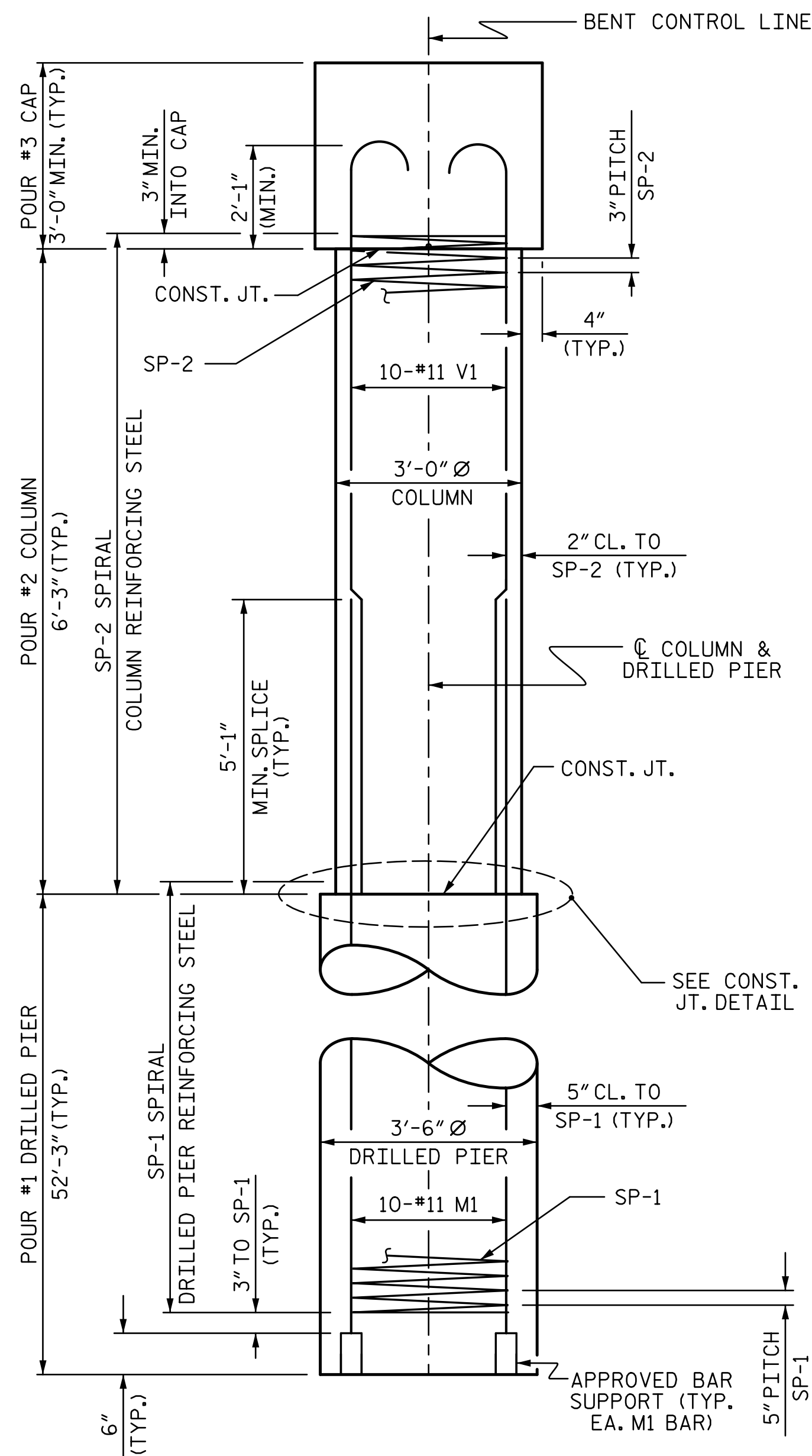
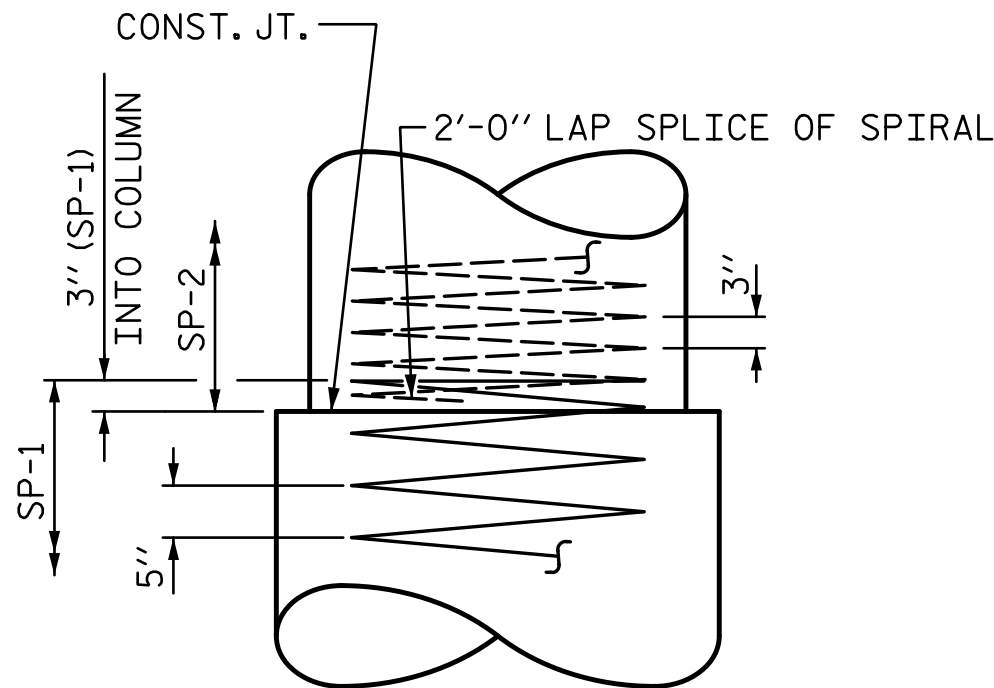


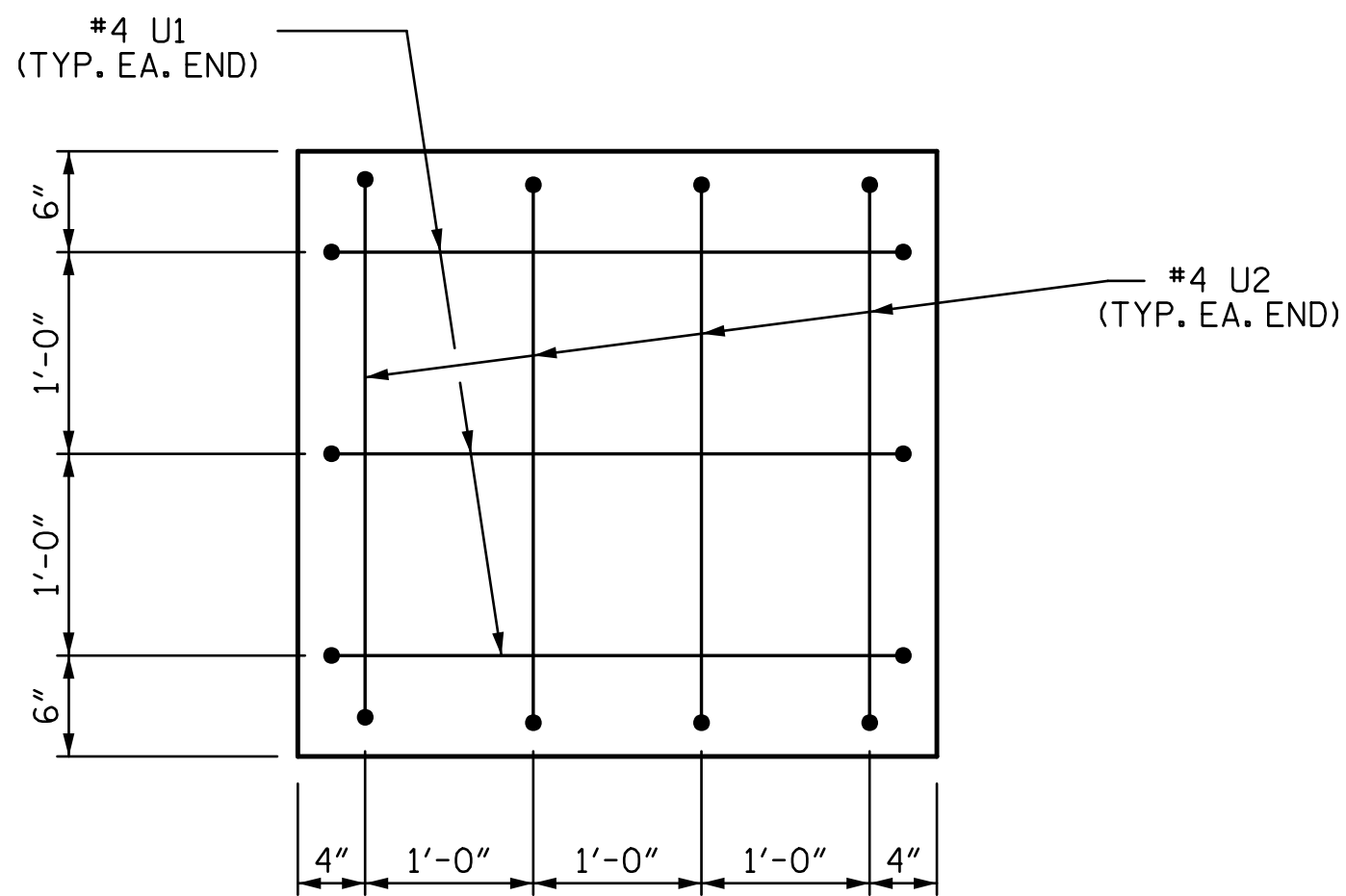
PLAN OF DRILLED PIERS & COLUMNS



END ELEVATION

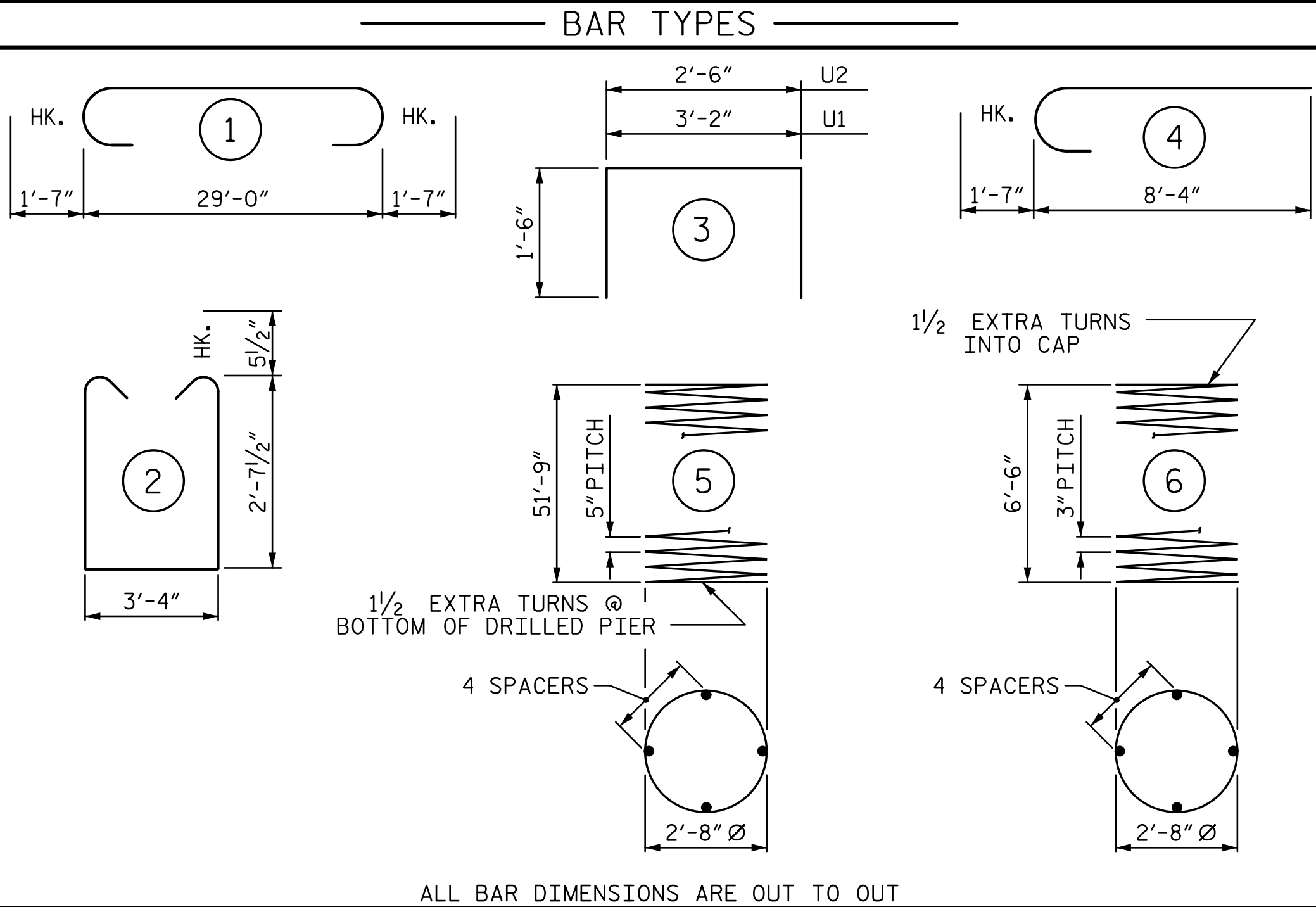


CONSTRUCTION JOINT DETAIL



END OF CAP VIEW

(TYPICAL BOTH ENDS)



BILL OF MATERIAL

BENT 1

BAR	NO.	SIZE	TYPE	LENGTH	WEIGHT
B1	10	#11	1	32'-2"	1709
B2	6	#5	STR	29'-2"	183
D1	36	#8	STR	2'-3"	216
M1	30	#11	STR	59'-10"	9537
S1	46	#5	2	9'-6"	456
U1	6	#4	3	6'-2"	25
U2	8	#4	3	5'-6"	29
V1	30	#11	4	9'-11"	1581

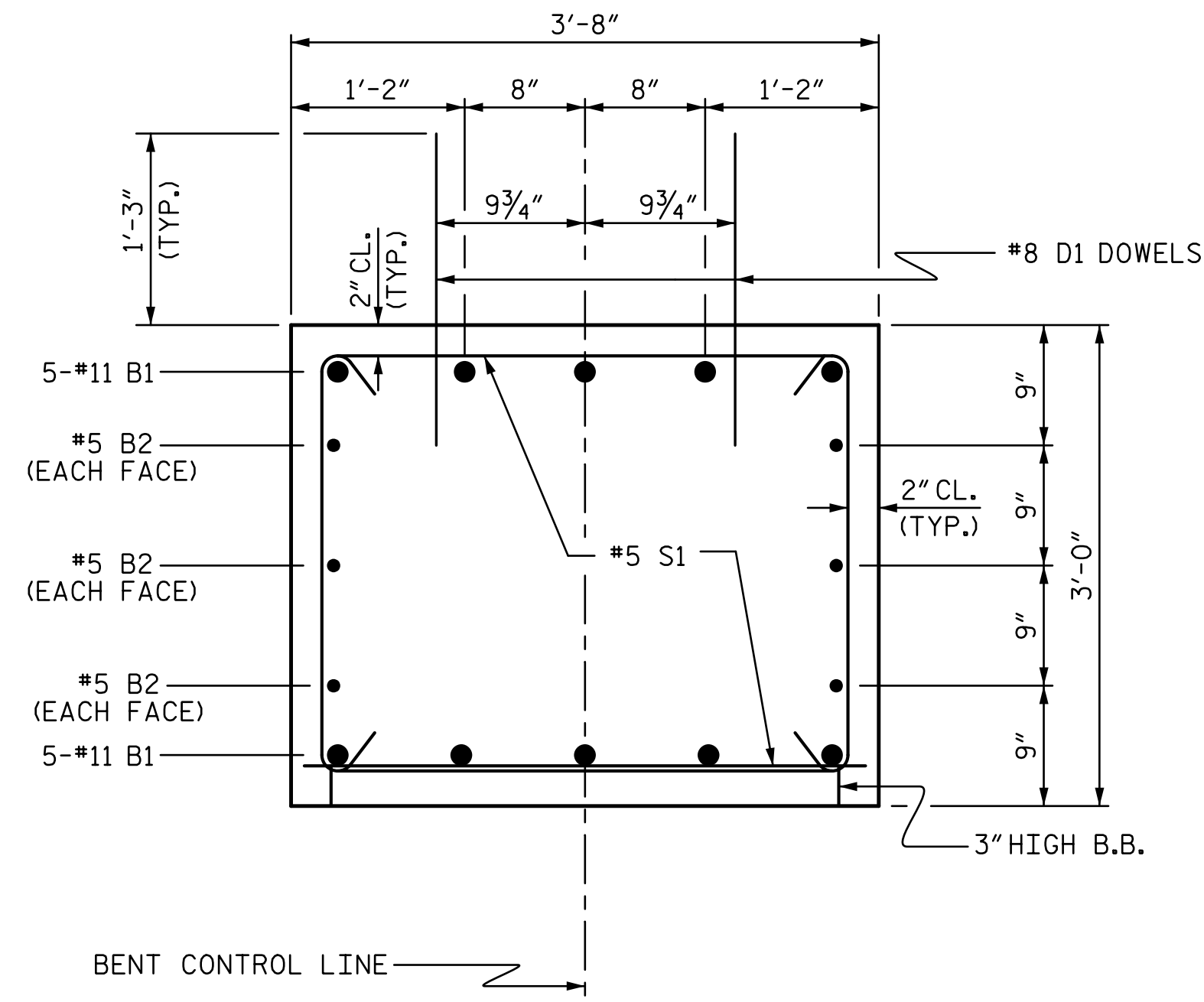
REINFORCING STEEL 13,736 LBS.

SP-1	3	*	5	1036'-3"	3242
SP-2	3	**	6	231'-0"	463

SPIRAL REINFORCING STEEL 3,705 LBS.

*THE SP-1 SPIRAL REINFORCING STEEL SHALL BE W31 OR D-31 COLD DRAWN WIRE OR #5 PLAIN OR DEFORMED BAR
**THE SP-2 SPIRAL REINFORCING STEEL SHALL BE W20 OR D-20 COLD DRAWN WIRE OR #4 PLAIN OR DEFORMED BAR

DRILLED PIER CONCRETE	
POUR #1 DRILLED PIERS	55.9 C.Y.
CLASS A CONCRETE BREAKDOWN	
POUR #2 COLUMNS	4.9 C.Y.
POUR #3 CAP	12.0 C.Y.
TOTAL CLASS A CONCRETE	16.9 C.Y.



SECTION THRU CAP

PROJECT NO. DF18314.2075090

POLK COUNTY

STATION: 12+15.00 -L-

SHEET 2 OF 2



STATE OF NORTH CAROLINA
DEPARTMENT OF TRANSPORTATION
RALEIGH
SUBSTRUCTURE

BENT 1
DETAILS

REVISIONS						SHEET NO.
NO.	BY:	DATE:	NO.	BY:	DATE:	
1			3			S-19
2			4			TOTAL SHEETS 24

DRAWN BY :	J. SCACCA	DATE :	02/2025
CHECKED BY :	T. R. LAWS	DATE :	02/2025
DESIGN ENGINEER OF RECORD:	T. R. LAWS	DATE :	10/2025

DOCUMENT NOT CONSIDERED
FINAL UNLESS ALL
SIGNATURES COMPLETED